

WHEN TRANSLOADING MATERIAL, SPEED MEANS PROFITABILITY!



A VARIETY OF MATERIAL SUCH AS:

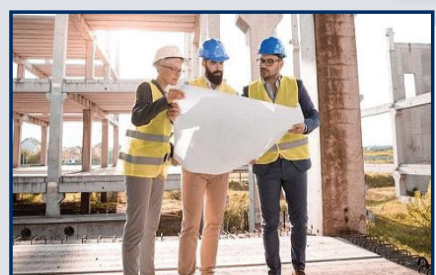
SODA ASH: 90,000 LBS. IN UNDER 20 MINUTES!



CEMENT: UNLOADING AT 120 TONS PER HOUR (TPH)



COAL: LOADING: 24 TONS IN 4 MINUTES!



All NEW IN 2024

- Parts Department Open Monday through Friday, 8 am - 5 pm MST
- Field Service Advisor on Call

ENGINEERING SERVICES

- 100+ Years of Combined Engineering Experience ready to help you with your application
 - Belt Design
 - Conveyor Design
 - Fabrication and Production Consultation



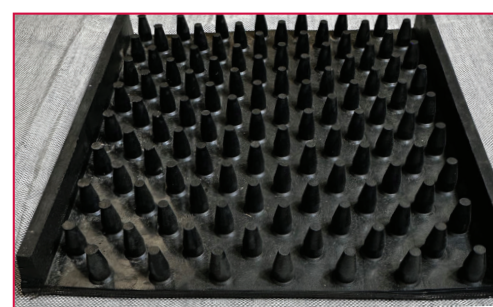
THE MOST TRUSTED NAME IN AMERICAN-MADE CONVEYOR BELTS SINCE 1960

The Undisputed Heavyweight Belt Champions of the World!

The belt in EVERY CONVEYOR WE MAKE is the #1 performing belt in it's class. Nobody builds them better, stronger or longer lasting!



No other belt can match the superior design and World-Class Performance!



CAMBELT

The **GOLD STANDARD** in High Incline Conveyor Belts



CAMWALL

Up to 90° Incline Capability



CAMFLEX

65° - 70° Inclines!

- All belts are made to customer specific application
- Widths from 6"-60", sidewall heights from 3"-6", all lengths
- SINGLE-MOLDED: no glued, or screwed cleats or sidewalls, no separation or dilapidation

3 CONVEYOR BELT MODELS THAT HAVE CHANGED THE BELTING WORLD!



"WHEN I CAME TO CAMBELT AND SAW HOW THEY MOLDED THEIR BELTS, I SAID "WHY WOULD ANYONE BUY A BELT MADE BY ANYONE ELSE. YOU GUYS ARE SIMPLY THE BEST THERE IS ON THE MARKET."

-AZ CUSTOMER 2023



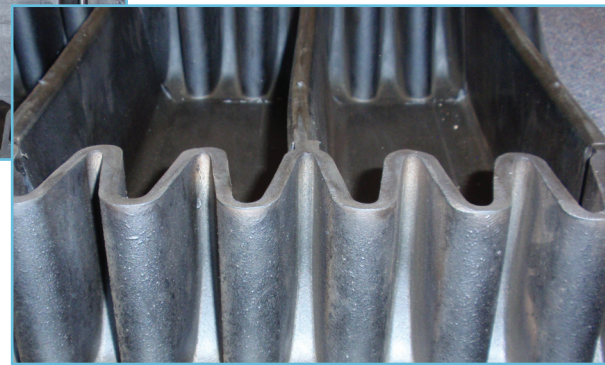
THE CAMBELT DIFFERENCE

CAMWALL



No other Belt can match the Superior design and World Class Performance

- Up to 90° incline Capability



#1 CAMWALL

- Fully molded cleats and sidewalls to belt carcass
- Capable of conveying up to 90-degree incline
- Recessed sidewall options for L and Z conveyor configurations
- Cleats, metal and plastic bucket, or no cleat options available

"The Cambelt team gives my customers and I the best service. Their CamWall belts save my customers maintenance and downtime costs over the competition's belts."
- Montreal, Canada

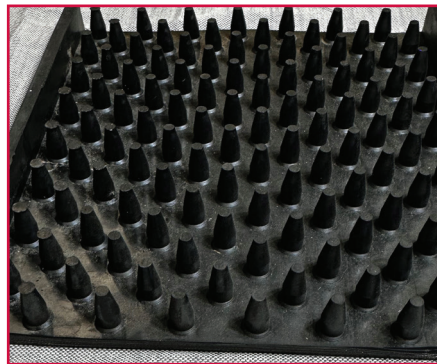
#2 CAMBELT

- Proprietary Design, no comparable product
- Capable of high belt speeds, 700 fpm
- Small footprint in width and height, high capacity
- Convey variety of materials up to 70-degree inclines
- Offered in 6", 12", and 24" widths

"Working with the Cambelt team is far easier than the competitors; they are responsive, have extensive product knowledge, and their product is made in America."
- WI Customer



CAMBELT



The **GOLD STANDARD** in High Incline Conveyor Belts

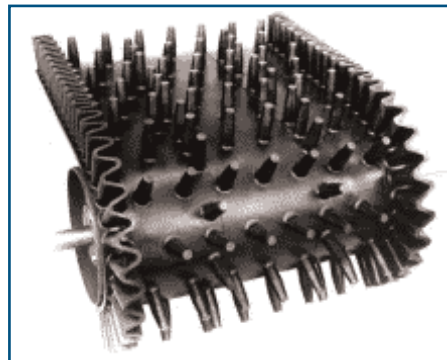


#3 CAMFLEX

- Capable of conveying high volumes due to continuous loading/unloading with nub design
- Fully molded nubs and sidewalls with belt carcass
- Engineered nub patterns for L and Z conveyor configurations
- Corrugated sidewalls allow for smaller pulley diameters to be used

"I get 3-5 times the life from your product compared to any other belt I can buy. Cambelt's belts offer 3-5 times more life than competitors belts."
- TX Customer

CAMFLEX



65° - 70° Inclines!
No other belt can match the performance and durability

"Cambelt's belts are our secret sauce."
- TX Customer